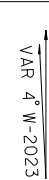
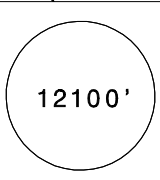
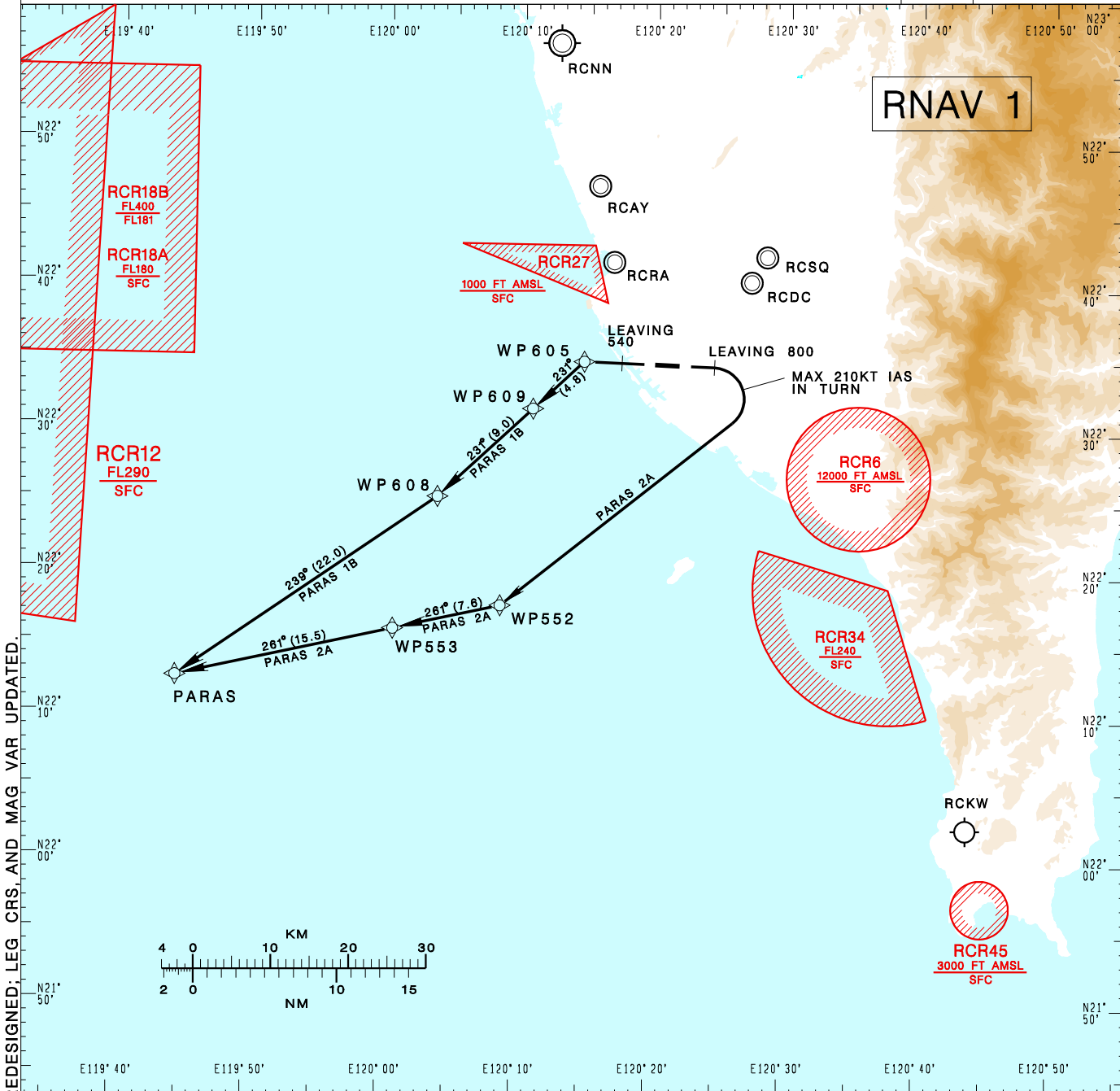


**高雄國際機場**  
KAOHSIUNG INTL AD

PARAS 2A RCKH SID  
PARAS 1B RNAV(RWY09)  
RNAV(RWY27)

KAOHSIUNG APP 124.7 125.7	KAOHSIUNG TWR 118.7 120.7	ATIS 127.8			
Apt Elev: 32'		Trans Level: FL130			Trans Alt: 11,000'
BEARINGS ARE MAGNETIC; DISTANCES ARE NAUTICAL MILES; ELEVATIONS, HEIGHTS IN FEET					



CHANGES: LEG BEFORE WP552 REDESIGNED: LEG CRS AND MAG VAR UPDATED.

**PARAS TWO ALFA RNAV DEPARTURE**  
Climb on RWY HDG until 800ft, then turn right direct to WP552, then to WP553, PARAS.  
Cross WP553 at or below 7,000ft.

**PARAS ONE BRAVO RNAV DEPARTURE**  
Climb on RWY HDG until 540ft, then direct to WP605, then to WP609, WP608, PARAS. Cross WP609 at or below 8,000ft.

**NOTE**

1. PARAS 2A:  
Minimum climb gradient required: 6.0% (365 ft/NM) until 2,000ft.  
Speed restriction of 210KT IAS maximum until established on track to WP552.
2. Caution: pier cranes, terrain and stacks east, west and south of the airport.
3. ATS surveillance required.